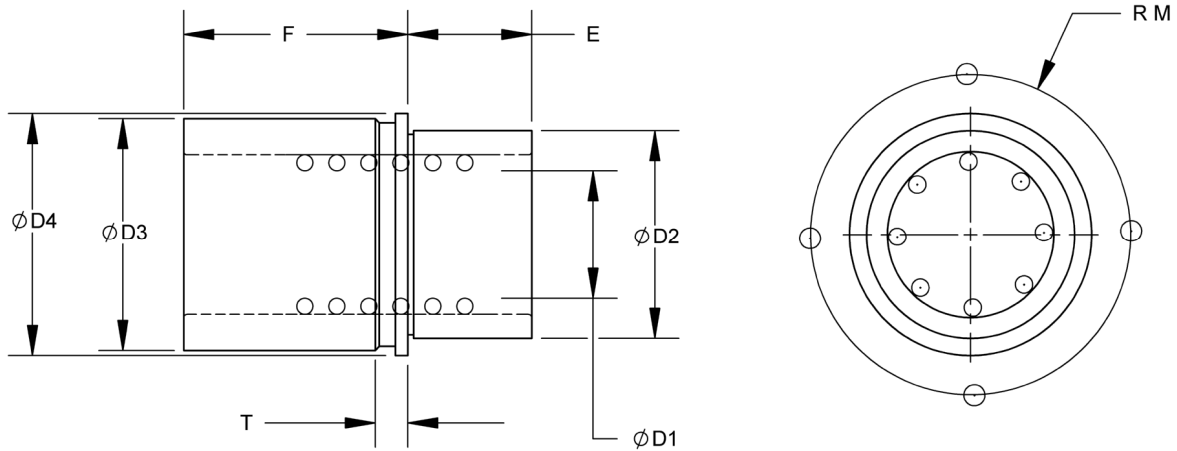


Case Hardened to 60 - 64 Rc



F	Diameter (D1)						
	1	1 1/4	1 1/2	1 3/4	2	2 1/2	3
1.25	B46.008.005						
1.50			B46.012.006				
1.75	B46.008.007	B46.010.007		B46.014.007			
2.00					B46.016.008		
2.25	B46.008.009	B46.010.009	B46.012.009				
2.50				B46.014.010			
2.75	B46.008.011	B46.010.011			B46.016.011		
3.00			B46.012.012				
3.25				B46.014.013			
3.50			B46.012.014		B46.016.014		
4.00						B46.020.016	B46.024.016
4.25					B46.016.017		
4.75						B46.020.019	B46.024.019
5.00					B46.016.020		
5.50						B46.020.022	B46.024.022
D2	1 7/8	2 1/8	2 1/2	2 3/4	3 1/4	3 3/4	4 1/4
D3	2 1/8	2 3/8	2 7/8	3 1/8	3 5/8	4 1/8	4 3/4
D4	2.283	2.533	3.033	3.283	3.783	4.283	4.908
E	1 3/16		1 7/16	1 11/16	1 15/16		
T	0.708						
M	1 11/32	1 15/32	1 45/64	1 127/32	2 5/64	2 5/16	2 11/16
CLAMPS	B01.008.001						
SCREWS	A25.010.006 (5/16-18x3/4)						
QTY	3			4			